



GEM-WP Panic Transmitter

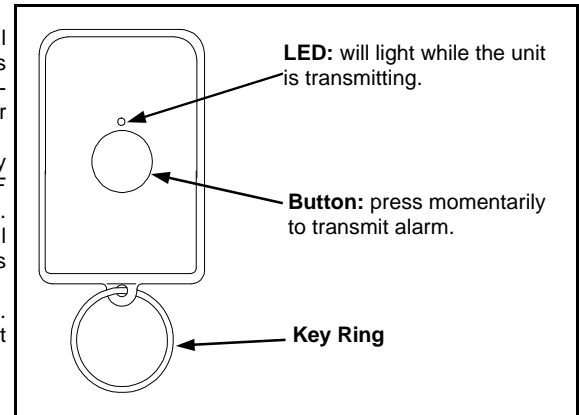
GENERAL DESCRIPTION

The GEM-WP is a single function pendant/keychain transmitter compatible with all Gemini and NAPCO Express control panels when used with the appropriate wireless receiver. The GEM-REVC-XP8 is compatible with the NAPCO Express Series and GEM-P400 & P800. For all other Gem series controls, the GEM-RECV8, GEM-RECV16 or GEM-RECV96 are compatible.

It serves as an emergency device for use as a police panic and/or auxiliary emergency transmitter. Two replaceable Energizer 386 1.5 V, Silver Oxide Cells power the GEM-KEYF transmitter. A flashing LED indication signals a low-battery warning to replace the batteries.

To operate simply press the button momentarily. **Note:** The button when pressed will transmit the respective signal to the Central Station. The LED will light while the unit is transmitting.

Low-Battery Check. The batteries are checked automatically during any transmission. A low-battery condition will cause the LED to come on for twice the normal time, then start pulsing about once every 1.5 seconds; a low-battery report will be sent to the receiver.



Single Button Panic Transmitter

REQUIRED PROGRAMMING

The following information is required for each unit. Refer to the instructions for the control panel and keypad in use for detailed programming information.

- ✓ an assigned Key Fob transmitter number
- ✓ area number(s) to which transmitter is applicable
- ✓ the 6-digit ID code with checksum digit printed on the transmitter (enter all numbers and/or letters, including leading zeros, if any)
- ✓ the appropriate Aux. 1 function (Panic or Auxiliary)

If more GEM-WP transmitter are needed, the GEM-P1632, GEM-P3200 & GEM-P9600 support the ability to map a GEM-WP directly to a zone.

- ✓ on the Wireless Screen, program the 6-digit ID code to a zone.
- ✓ program the point as point 3.
- ✓ on the zone features screen, program the zone for 24 hour protection, and remove swinger shutdown if programmed.
- ✓ on the Alarm / Trouble reporting screen Program the appropriate reporting code.

BATTERY REPLACEMENT

To replace the batteries:

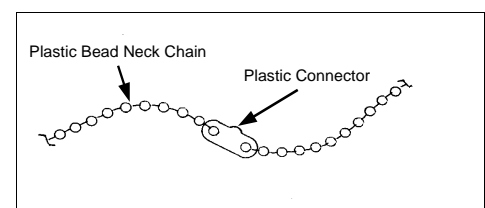
1. Remove the screws on the bottom of case and turnover. Lift off the top cover exposing the circuit boards.
2. *Carefully* lift the top circuit board to allow removal of batteries from bottom circuit board. Lift the top circuit board away from the bottom circuit board **no more than 45 degrees** (see figures 1 and 2) to allow removal of batteries.
3. Slide the bottom battery out and away from the circuit board. Replace the battery as shown (see figures 3 & 4).
4. Replace the top battery by sliding it out to the right. Replace the battery as shown (see figures 3 & 4).
5. Carefully press the top circuit board back toward the bottom circuit board. Reassemble the case and slip the neckchain through the eyelet.
6. Test the button to verify its function.

Note: Inform the Central Station about the test or disable the transmission of panic during the test.

ADJUSTING CHAIN LENGTH

The GEM-WP has a Plastic Bead Neck Chain included. To adjust its length:

1. Disconnect the chain from one end of the plastic connector by removing a plastic bead.
2. Using a pair of scissors cut the chain at its desired length.
3. Reconnect the chain to the connector by inserting a bead into the connector.



Plastic Bead Neck Chain

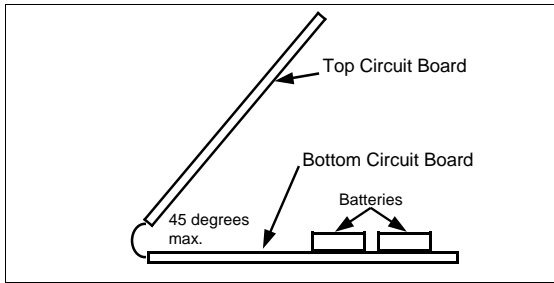


Figure 1: Side View - Lift Top Circuit Board

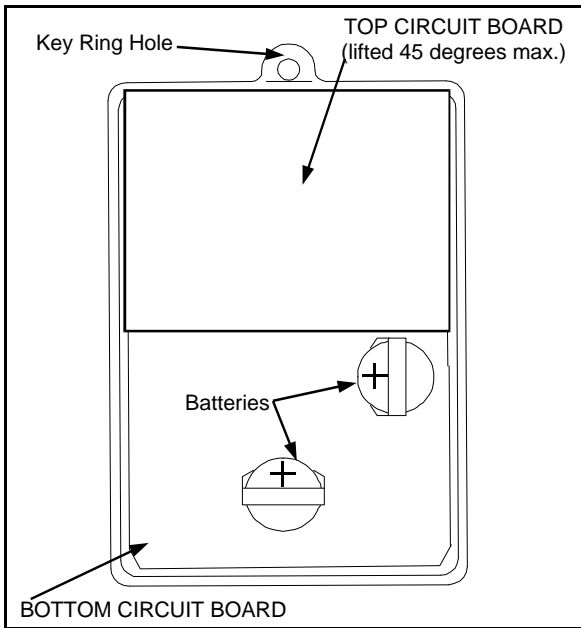


Figure 3: Top View of Bottom Circuit Board for Battery Replacement with Top Circuit Board

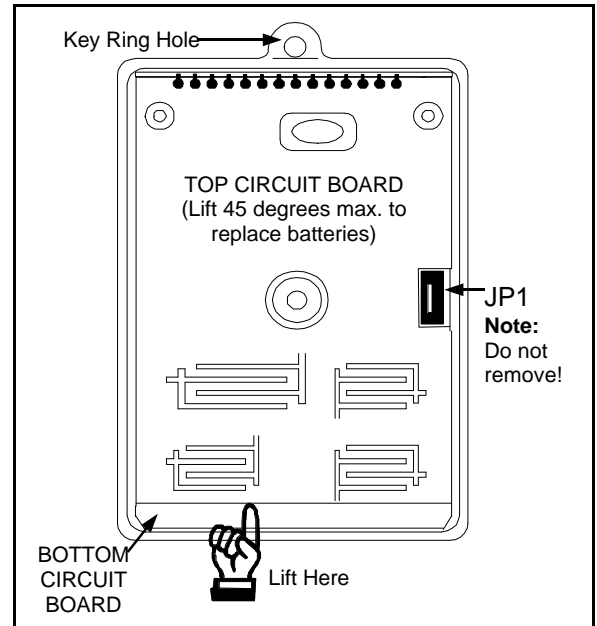


Figure 2: Top View of Top Circuit Board

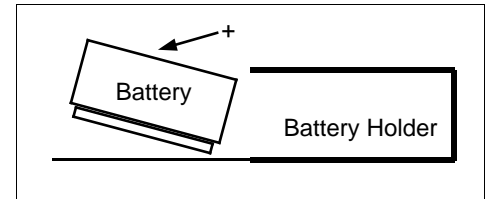


Figure 4: Angle the Battery on Entry