

Holland

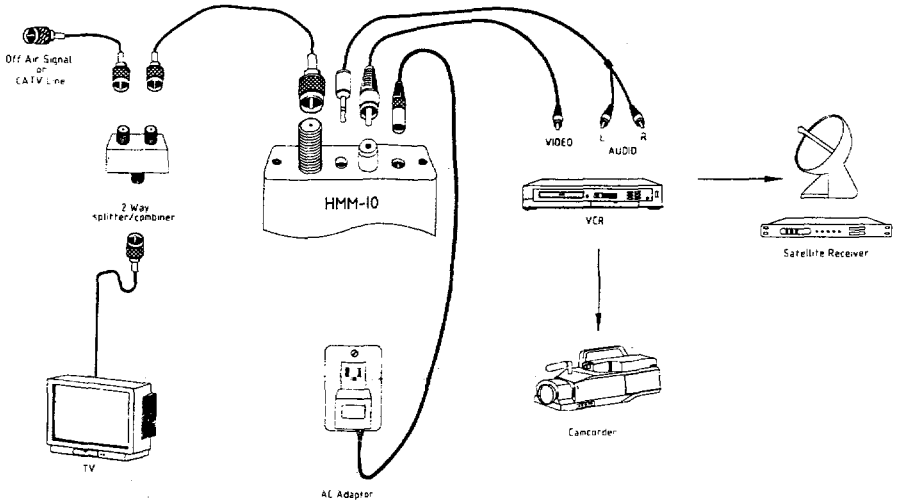
Digital Agile Audio/Video Modulator Model HMM-10

INSTALLATION INSTRUCTIONS

I. Modulator Installation:

1. Insert the male RCA connector from the video source in the the HMM-10 RCA jack
2. Insert the 3.5mm miniature plug from the audio source into the HMM-10 audio input (Mini Jack)
3. Connect F to F connecting cable from RF output (F-Female connector on HMM-10) to one of output port out of a splitter.
4. Connect cable from Off-Air or CATV line or any other RF signal source to other port of splitter.
5. Connect input of splitter to TV RF input.
6. Plug the provided 12 VDC. 100 mA power supply into the power line and HMM-10 power jack

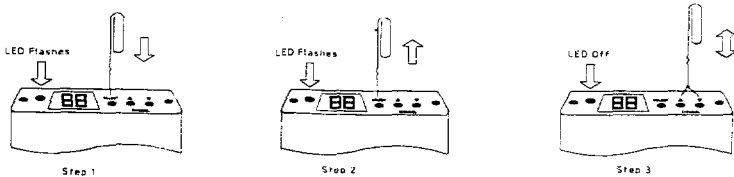
This completes the installation of HMM-10 modulator



II. Channel Programming Steps:

- Step 1. Using small-end screwdriver press and hole "select" button until LED flashes.
- Step 2. Release button and press "channel" button up or down to desired channels. This Process can only be done while LED is flashing.
- Step 3. Press select button so LED stops flashing, or let LED stop flashing by itself.

This completes channel selection



*Note:

1. While doing channel selection process, if power goes off, the last channel memory will malfunction even though LED will still be flashing.

2. Channel indicator

When selected channel is two digit, Ch-14 thru Ch-99, each channel can be shown in channel indicator, if the selected channel is three digits, Ch-100 thru Ch-135, only the last two numbers will be shown on channel indicator with a dot between the two numbers, and the third digit "1" will not be shown.

Example:

If indicator shows 32 this means Channel 32, if indicator shows 3.2 this means Channel 132

|32| |3.2|
CH 32 CH 132

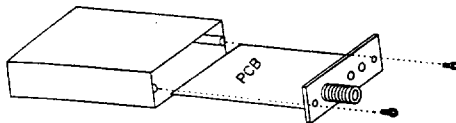
HMM-10 DIGITAL MODULATOR

CHANNEL MODE SELECTION

NOTE: MODULATOR IS PRE-SET TO CHANNELS: UHF (14-39) AND CATV (91-94, 100-135)

STEP 1

UNPLUG THE AC ADAPTER FROM THE HMM-10 MODULATOR.

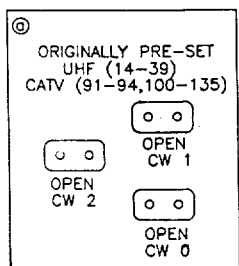
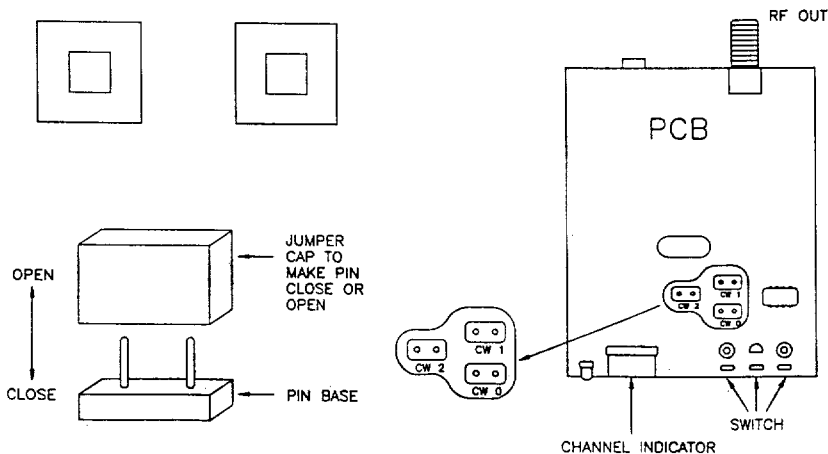


STEP 2

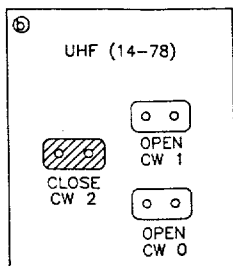
REMOVE SCREWS FROM OUTPUT CONNECTOR PANEL AND PULL OUT PRINTED CIRCUIT BOARD.

STEP 3

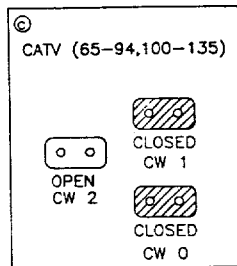
INSTALL JUMPER CAPS TO SELECT PROPER CHANNEL MODE.



ⓐ OUTPUT CHANNELS:
UHF (14-39) AND
CATV (91-94,100-135)
CW 0, CW 1, AND CW 2
ARE OPEN



ⓑ OUTPUT CHANNELS:
UHF (14-78)
CW 0, CW 1 ARE OPEN
CW 2 IS CLOSED



ⓒ OUTPUT CHANNELS:
CATV (65-94,100-135)
CW 2 IS OPEN
CW 0, CW 1 ARE CLOSED

STEP 4

RE-INSTALL PRINTED CIRCUIT BOARD INTO HMM-10 CASE.

STEP 5

PLUG AC ADAPTER INTO HMM-10 MODULATOR.

HOLLAND

Electronics

HOME
MICRO MODULATOR
HMM-10

SPECIFICATIONS

| | |
|-------------------------------------|--|
| Output Frequency Range | 470-860 MHz |
| Output Channels | UHF: Ch. 14-78 CATV: Ch. 65-135 |
| Video Frequency Response | +/- 1dB |
| Aural Intercarriers Stability | 4.5 MHz w/n +/- 3KHz |
| Video Input IMP/RF Output IMP | 75 Ohm |
| Audio Input IMP | > 10K Ohm |
| Frequency Accuracy/Stability | PLL Crystal Stabilized +/- 5KHz |
| Video Input Level | 1Vp-p |
| Audio THD | 0.4% |
| Output Level | + 25dBmV |
| Video MOD Index | 70% +/- 10% |
| Dual Sideband | |
| Aural/Visual Carrier Ratio | -15dB |
| Video S/N Ratio/Audio SN Ratio Typ. | 52dB/50dB |
| Size | 95L x 75W x 26H m/m (3 3/4" x 3" x 1") |
| Weight | 4 Oz. |
| Power Requirement | 110-120 VAC/60Hz |