

# Super Wi-Fi USB Antenna

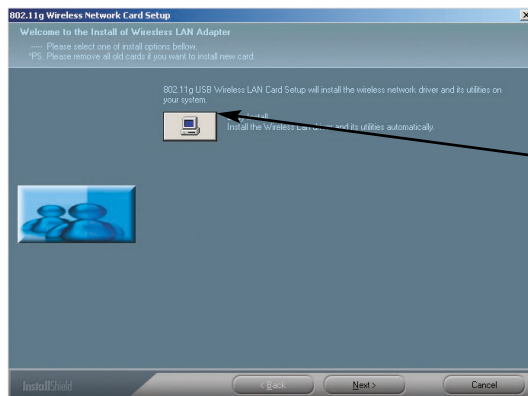
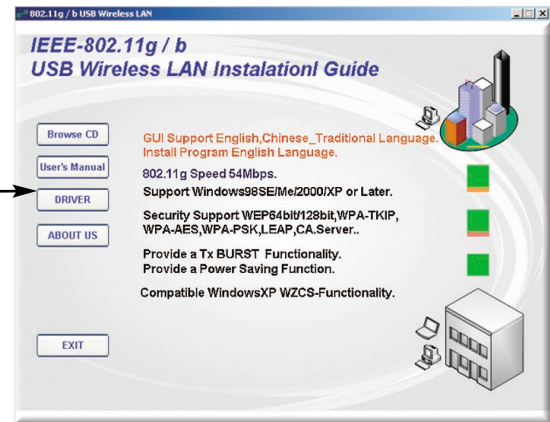
## About the Super Wi-Fi USB Antenna

Thank you for purchasing the Super Wi-Fi USB Antenna. This up to 20 dBm High-Gain omni-directional antenna is probably the best indoor, RV or mobile Wi-Fi antenna made. Your computer does not need an internal Wi-Fi card or antenna. Simply install the software, plug the cable into a USB port on your computer, and you're ready to go!

## Installation (Windows 98 & Above Only)

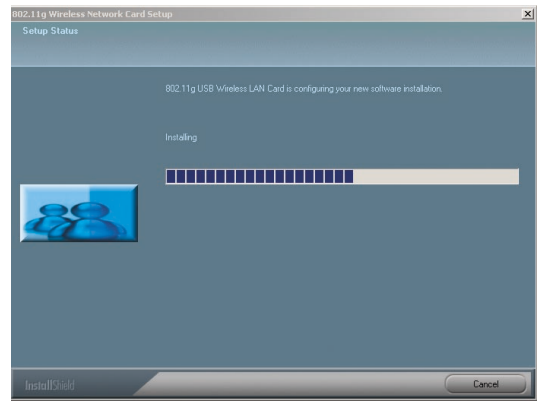
Before installing the included software, use the provided suction cups to place the antenna in the best location in relation to your computer, keeping in mind the length of the USB cable. You will be prompted to connect the cable to your computer later in the installation process.

Insert the included software CD into your computer. The "IEEE 802.11 g/b USB Wireless LAN Installation Guide" window will automatically appear on your computer screen. Click the DRIVER button.



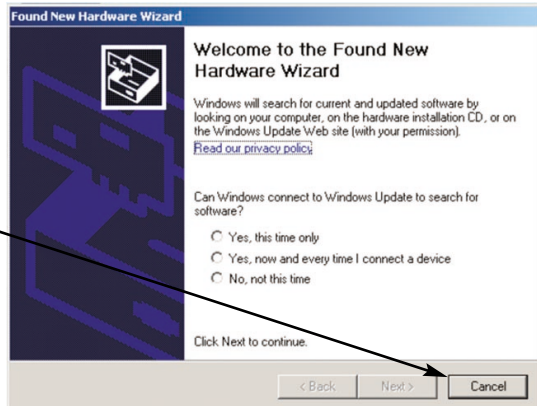
The following screen will appear. Click the EASY INSTALL button to start installation.

A window with a progress bar will open. When the bar is full, this part of the installation is complete. You will be asked to “Please wait.”



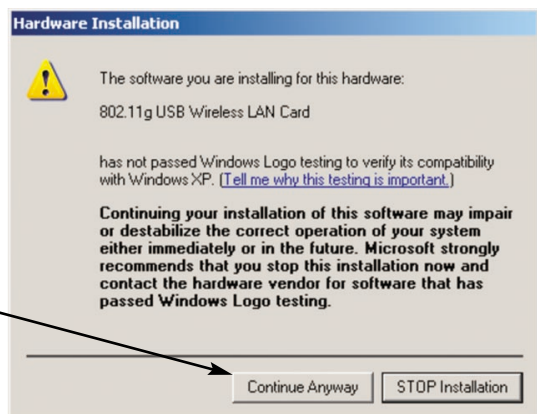
Next, you will be prompted to connect the Super Wi-Fi USB Antenna. Connect the antenna even if you do not receive the prompt. Simply plug one end of the included cable into the antenna and the other end into any available USB port on your laptop or desktop computer.

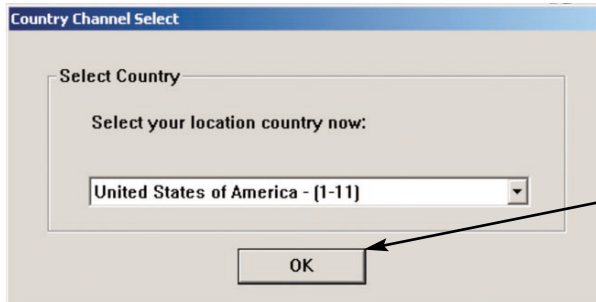
If the Windows “New Hardware Wizard” window opens click CANCEL.



Next, a “Hardware Installation” window will open. Click CONTINUE ANYWAY. You will be asked to “Please wait” again.

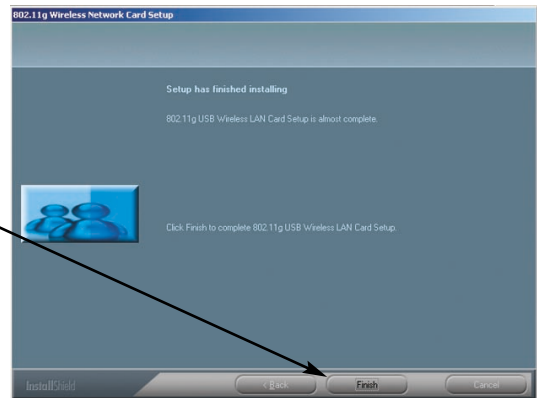
Note: The “New Hardware Wizard” does not always work properly with this device. Clicking CONTINUE ANYWAY should help avoid those problems.



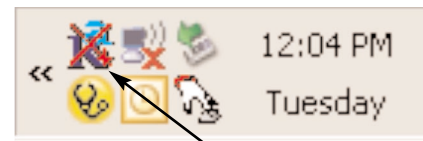


A "Country Channel Select" window will prompt you to select your country. The default selection is the U.S. If you live in the U.S. click OK.

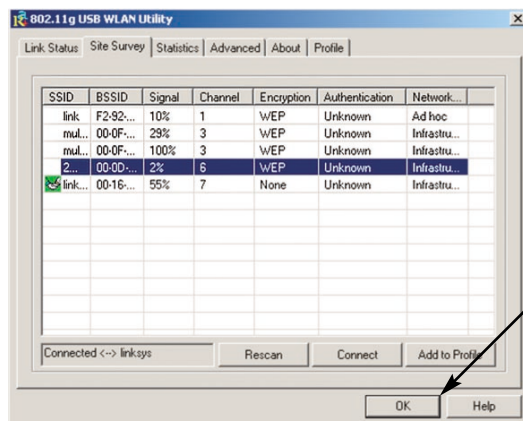
Installation will take a couple minutes. Once installation is complete, click the FINISH button to close the "802.11 g Wireless Network Card Setup" window.



Once the software is installed, an icon for the Super Wi-Fi USB Antenna (a blue R with a red X) will appear in the lower right hand corner of the computer desktop. Right click on the icon and select "Use 802.11 g USB as Configuration Utility."



Disconnected



Next, the "802.11 g USB WLAN Utility" window will open. Click on the wireless network that you want to connect to, then click OK.



Connected

Now the Super Wi-Fi USB Antenna icon in the lower right corner of the computer desktop should be a yellow R with a red +.

Click the EXIT button to close the "802.11 g/b USB Wireless LAN" window. Installation is complete.



## Specifications

Model No.:	TG-USB-OMNI	Receive Sensitivity:	11b: 85 dBm@11 Mbps, 11g: -72dBm@54 Mbps
Standard:	IEEE 802.11 b/g	Range:	11b: 1 mile, 11g: 1/2 mile (Line-of-sight)
Signal Type:	DSSS (Direct Sequence Spread Spectrum)/ OFDM	Compatibility:	Windows 98 and above
Modulation:	BPSK / QPSK / CCK / QAM	LED indicators:	Power, Link Status
Host Interface:	Mini USB 1.1 / 2.0	USB Power:	5V DC, 450mA Tx, 30mA Power-Saving Mode
Antenna:	4.5 dBi Omni-directional antenna	Temperature:	Operating: 0°C to 55°C
Data Encryption:	64 / 128 bit WEP / WPA	Storage:	-20°C to 70°C
Frequency Band:	2.4 GHz ~ 2.4835 GHz	Humidity:	95% Non-Condensing
Channel:	11 Channels (U.S. & Canada)	Certification:	FCC, CE
Data Rate:	Up to 54 Mbps	USB Cable:	16.5'
Transmit Power Output:	11b: 20 dBm, 11g: 17 dBm (Typical)		