

ONE YEAR LIMITED WARRANTY

Purchase Date: _____ ITEM# (above UPC code) _____

This Limited Warranty is effective upon purchase date. Please fill out the separate registration card and mail.

1. Lentek warrants this product to be free of manufacturing defects. Should any such defect develop or become evident within ONE year from the date of purchase, Lentek will replace the entire product or, at its option, repair or replace the defective part(s) without charge.
2. To return, securely pack the entire unit. Be sure the carton clearly identifies the sender by name and address. Attach a letter or card describing the nature of the defect. The original receipt of the purchase must be included in the returned package to be eligible for warranty coverage.
3. This warranty is void if the damage or malfunction is due to abuse or failure to operate the product in accordance with the instructions and/or on the recommended electrical current.

Mail prepaid via insured parcel post to:

LENTEK
Warehouse: 4330 Commerce Drive
Batavia, NY 14020



Another Quality Brand from Koolatron

Warehouse: 4330 Commerce Drive

Batavia, NY 14020

Telephone: 407•857•8786/888-3-LENTEK

Fax: 407•857•4045

www.lentek.com

© 2005 Lentek A Division of Koolatron, Inc. All rights reserved.

Specifications are subject to change without notice.



REVINSTMK05-0305



MOSQUITO TRAP



DIRECTIONS FOR USE



MAINTENANCE & CLEANING

1. Check the capture bag on a regular basis depending on how many mosquitoes are being trapped. Start by checking the trap once a week and adjust according to the catch. Use only clean water to rinse the bag, do not use any chemical or soap as the fragrance may keep repel mosquitoes from the trap. Mosquito Fact: About 800 dead mosquitoes equals 1 tablespoon! One ounce equals over 65,000 dead mosquitoes!
2. **CAUTION:** Do not obstruct the flow of ventilation air around the Mosquito Trap. (Example: Placing on padded surface.)
3. Clean the Mosquito Trap outside surface with a mild detergent on a damp cloth. Rinse with clean water only. **NOTE:** Always remember to unplug the unit and remove the attractant cartridge before cleaning. Do not spray with or immerse in water. Do not use a dripping wet cloth!

OPERATIONAL OPERATION

1. Avoid placing the Mosquito Trap in direct sunlight
2. Dispose of all used attractant in a trash receptacle. Do not store the Mosquito Trap near insect repellents or other chemicals. Unopened attractant should be stored in a cool, dry place.
3. The connection between the Mosquito Trap and any extension cord used must be kept dry and off the ground.
4. Disconnect the Mosquito Trap from the power supply when not in use, before adding attractant cartridges, before cleaning, before servicing, or for storage.
5. The Mosquito Trap should be stored indoors when not in use and kept away from children.
6. To avoid electric shock, DO NOT clean the Mosquito Trap with spraying water or by immersion in water or other liquid.
7. All repairs to the Mosquito Trap must be performed only by qualified service personnel.
8. Read and follow all instructions prior to use of the Mosquito Trap.
9. Young children should be carefully supervised when they are in the area of the Mosquito Trap.
10. Clothing or other flammable materials should not be hung from or placed on the Mosquito Trap.
11. Any guard or other protective device removed for servicing the Mosquito Trap must be replaced prior to operating.
12. Keep the area around the Mosquito Trap clear and free from combustible materials, gasoline, and other flammable vapors and liquids.
13. Do not handle the Mosquito Trap when using insect repellents.

NOTE

Do not place Mosquito Trap on unstable surfaces or areas where trap may tip over, or on electrical appliances.



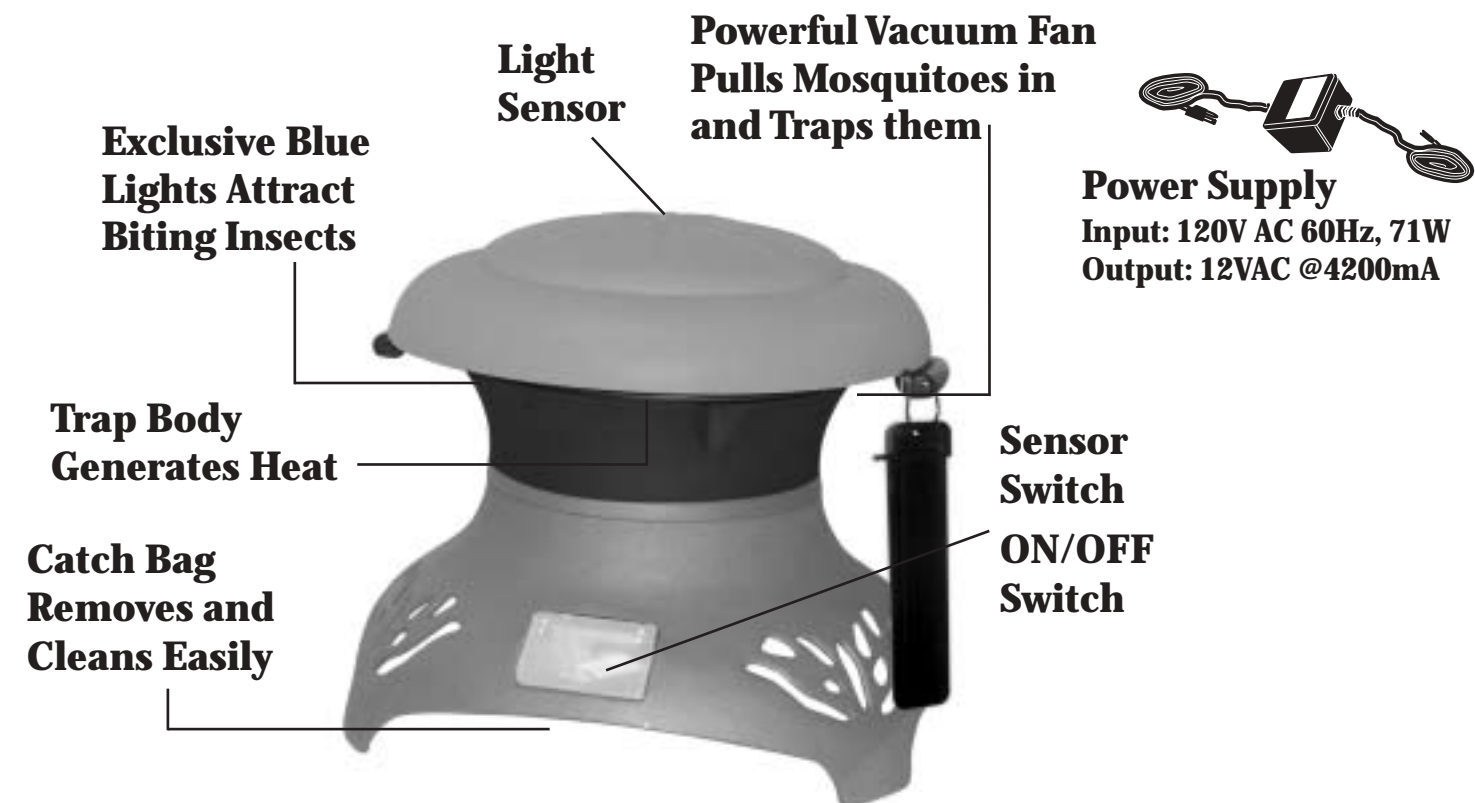
DIRECTIONS FOR ASSEMBLY AND USE

*Read before unpacking and operating the Lentek Mosquito Trap.
The Mosquito Trap requires 120V AC.*

FOR YOUR SAFETY:

Do not store or use gasoline or any other flammable vapors and liquids in the vicinity of the Mosquito Trap or any other appliance.

PRODUCT DETAILS



ASSEMBLY

The Lentek MK05 Mosquito trap comes fully assembled and ready for use. If you are using an Octenal attractant cartridge simply hang it from the hole in the top.

OPERATION

Carefully place the trap in the location you have selected following the "WHERE TO PLACE THE MOSQUITO TRAP" and all of the "SAFETY" guidelines. Proceed as follows:

1. Plug in the power supply cord to an approved outdoor use extension cord or directly into 120V AC Outlet, as per the safety instructions and plug the other end into the Mosquito trap.
2. Locate the ON/OFF button near the bottom edge of the main body behind the protective shield. Turn the unit on.
3. The button to the left of the power switch selects either constant ON, or auto daylight sensor. When in the sensor mode the unit will run from dusk to dawn.
4. LED Light: Red = Constant ON; Green = Auto Sensor ON

WHERE TO PLACE THE MOSQUITO TRAP

Many species of mosquito have an adult life span that lasts about two weeks. About 3000 species of mosquito have been identified world-wide, with approximately 170 species found in the United States. Both male and female mosquitoes feed on plant nectar, but only the female requires a blood meal. The blood meal is needed for each batch of eggs the female lays, typically she feeds once every 3-4 days. A blood meal usually lasts about 90 seconds if the mosquito is not disturbed and can equal about 1 1/2 times the female mosquitoes' body weight! A single female can lay thousands of eggs during her life span.

The female mosquito is attracted by scent, temperature, shape, color, movement, and for some species, even sound. The female mosquito is most active between 50° Fahrenheit and 95° Fahrenheit in calm or light breeze conditions. Mosquitoes tend to travel up-wind when seeking a blood meal. The placement of the Mosquito Trap will greatly affect the success of the unit capturing mosquitoes. The largest number of mosquitoes will be captured by positioning the Mosquito Trap as follows:

Outdoors: Find the normal down-wind direction from the area you want to reduce mosquitoes (towards where mosquitoes are living, i.e. trees, bushes, water). Place the Mosquito Trap in the downwind area at the edge or slightly beyond, of the

patio, deck, or other area where you want to reduce mosquitoes. Be sure to place the Mosquito Trap out of direct sunlight. Do not place the Mosquito Trap under a bright light. Maximum height of 6 feet. The idea is to keep mosquitoes away from you when outside. So, do not place it where you are gathered. Place it where they live and reproduce.

Indoors: The MosquitoTrap can be used indoors when mosquitoes are a problem there. Place the unit on a stable surface in the room or area where mosquitoes are most likely to enter. Leave interior doors open to allow the mosquitoes to find the trap. Do not place unit on electric appliances such as a television. Look for air movement within the house to find ideal locations for the trap. Just like outdoors, mosquitoes will tend to travel upwind indoors, following air currents in their search for a meal! Do not place the Mosquito Trap under a light. With careful placement, mosquitoes will encounter the Mosquito Trap and be captured before coming into contact with you and your family. Place the Mosquito Trap on a stable surface where children and pets cannot come into contact with or bump the unit.

HOW THE MOSQUITO TRAP WORKS

The Lentek Mosquito Trap utilizes a blend of attractant odors, body temperature (thermal imaging), color, shape, and airflow in an effective design that captures mosquitoes. The Lentek Mosquito Trap uses a traditional mosquito trapping approach, combined with the latest in research, to turn the female mosquitoes' natural hunting techniques toward seeking out the trap and facilitating capture in a product that private home owners can use. Beneficial insects remain unharmed because mosquitoes are specifically targeted. The Mosquito Trap operates by capturing a steady number of egg laying females. But, different mosquitoes are more active at different times of the day.

Constant ON: To achieve the best results from your Mosquito Trap, you must leave it in operation full-time during the mosquito season. The trap is not meant for occasional use, such as during an outdoor party. The Mosquito Trap operates by catching steady numbers of egg-laying female mosquitoes each day, thus gradually reducing the overall local population over the course of time.

Auto Sensor: The benefit of using this feature is less power consumption since the auto sensor turns the unit on at dusk and then off at dawn. Dusk to dawn is the most active time period for mosquitoes.

A capture of only a few mosquitoes daily, will have a substantial future impact. It is for this reason, we recommend to leave the trap operating full-time and in a matter of weeks, you will notice a marked reduction in the mosquito population around the area, as well as, a reduced number of mosquitoes in the trap. Since mosquito eggs can survive for several seasons, using your trap this season, will also reduce the number of eggs hatching next season. continued use of the Mosquito Trap every season will allow you to take back the great outdoors. Enjoy!