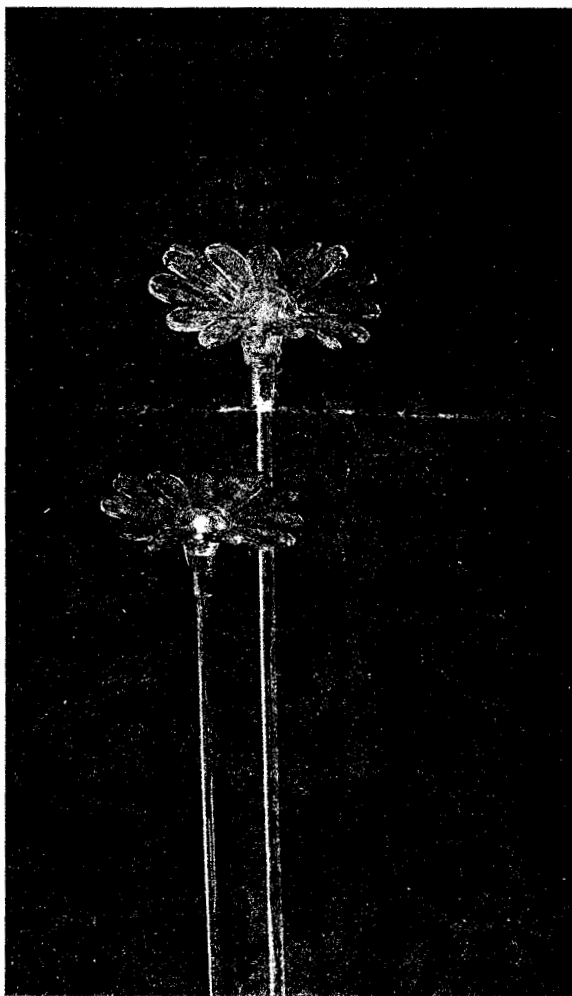


St. Petersburg

SOLAR  
FLOWERS/2PCS  
GARDEN LIGHT




INSTRUCTION MANUAL



## ABOUT SOLAR GARDEN LIGHTING

During daytime, the solar panel will convert the sunlight into electricity and recharge the battery. In the evening the Solar Light will turn on automatically. The hours of light will depend on your geographical location, weather conditions and seasonal lighting availability.

## BOX CONTENTS

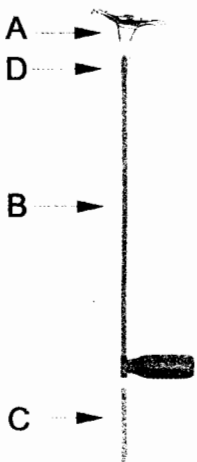
LIGHT HEAD	CONNECTING POLE	GROUND SPIKE
		
2PCS	2PCS	2PCS
<b>A</b>	<b>B</b>	<b>C</b>

## BEFORE USING

Step 1. Turn on the ON/OFF switch



## LIGHT CONSTRUCTION



### SPIKED DISPLAY

1. Remove the PE bag **D**
2. Insert flower to part **B**
3. Connect part **B** and part **C** together and partially stake into ground

## CHOOSING A LOCATION FOR YOUR SOLAR MARKERS

Choose an outdoor location with full and direct sunlight through the day to ensure the solar panel receives the maximum amount of sunlight to recharge the battery. Shadowed locations should be avoided - reduced sunlight during the day will reduce the lighting hours at night. Also avoid locations where other artificial lighting such as street lights, porch lights etc, might cause the solar light to switch itself off automatically.

## REPLACING BATTERIES

The rechargeable battery supplied with the product are is AAA rechargeable Ni-Mh battery (1.2V/600mAh) and can be purchased from most electrical retailers. We recommend after replacing the battery, that the "first time use" instructions are followed.



Step 1. Unscrew the 3 screws



Step 2. Unclip the battery cover and remove the old battery



Step 3. Place your new battery in the light head and clip the battery cover back in place



Step 4. Retighten the 3 screws by turning them clockwise

## WARNING

Do not dispose of used batteries in fire, as batteries may leak, explode and cause injury. Preserve the environment by disposing of batteries in accordance with your local authority guidelines. Keep batteries out of reach of young children.

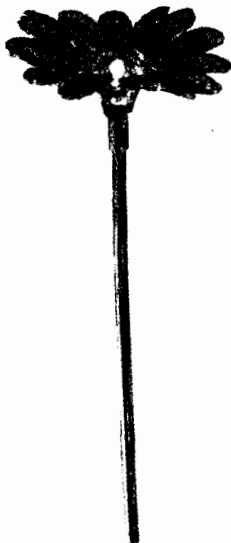
**CONCERNING THE BATTERY:**

IMPORTANT - This product contains a rechargeable Ni-Mh battery. When the battery expires, the battery must be recycled or disposed of properly. If in doubt please contact your local authority concerning the disposal of this battery.

**DO NOT DISPOSE OF BATTERY IN FIRE****FIRST USE:**

After assembling your Solar Flowers Garden Light, charge the battery in direct sunlight on a full sunny day. The light will turn on automatically at night.

Partially charging the rechargeable Ni-Mh battery will reduce the service life of the battery.



Distributed By  
Master Craft Products Corp.  
Dana Point, CA 92629.  
Manufactured in China