

Add-a-Motor Model 2000

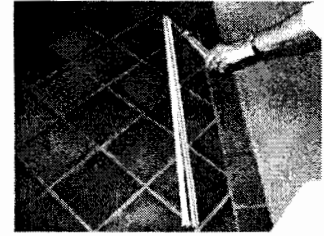
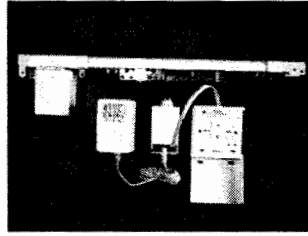
Remote Control Drapery System

Owner Manual & Installation Instructions

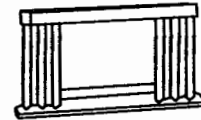
“The track that unfolds”. Virtually no assemble. Controls 100-pound curtains.

Index

Thank you	Page 1
Included components	Page 1
Track dimensions	Page 1
Tools needed	Page 1
Carefully plan your installation	Page 1
Child safety warning	Page 1
Installation Steps	Page 1 - 4
Problem Solving - Warranty	Page 4



Thank you for purchasing our Model 2000 Remote Control Drapery System. It is a professional grade system, precision engineered for reliable service.



Center-open only

To make installation easy, read this entire manual before proceeding.

Included Components:

1. Folded 4-piece track system, Master Carrier/Overlap Arm, Secondary Carrier, Connectors, Drive Cable, Motor Bracket, End Bracket.
2. Wheel Carriers installed in track to accept drapery fabric hooks (hooks not furnished).
3. Motor assembly.
4. Wall Mount Control Pad and Control Cable.
5. Remote Control and batteries (3).
6. Power supply: Output 24-volt, 0.5 Amp, AC-DC Adapter.
7. Mounting hardware. Tensioning Wrench. Adjustment Screwdriver.

Track Dimensions

Maximum Track length is 20-feet (240 inches) including attached Motor Bracket and End Bracket. Finished Track length can be reduced by cutting or removing Track section.

Tools Needed: Drill, tape measure, screwdriver, wire cutter, hacksaw, pencil.

Carefully plan your installation: Consider these important factors before installation.

Finished Track Length: Usually the length of track being replaced.

In new installations, consider the following before determining Finished Track Length.

A. Drapery Opening: The unobstructed view when drapery is fully open.

B. Stack-back: Space where drapery gathers in open position. Stack-back depends on fabric thickness. Stack-back can range from 20% to 30% of track length. Model 2000 Track provides same Stack-back as a conventional track.

C. Space: Boundaries posed by physical space such as mounting inside a window frame, adjacent wall, floor, ceiling, etc. In a home theater, the Opening must be larger than the screen with adequate space for the required Stack-back.

D. Opening Direction:

Model 2000 is center-opening system.

Child Safety

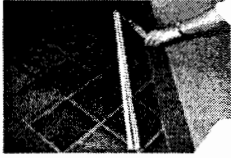
⚠ WARNING: Some components pose swallow or inhalation hazard. Keep children and pets away all times.

INSTALLATION STEPS

1. Determine Finished Track length for your installation.

Measure track being replaced. **Important:** If mounting inside a window frame, **subtract ¼ to ½"** for adequate clearance. **Note:** Most inside window frame are ceiling mounts.

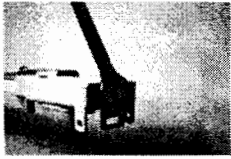
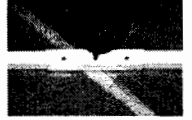
In a new installation, finished track length is the fully closed width of new drapery, measured at top pleats.



NOTE: Tape-hinges hold track sections together. Hinges are non-structural. **DO NOT** remove hinges.

2. Carefully unfold track and lay on floor.

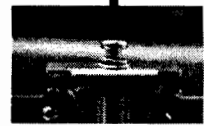
- ✓ Do Not twist track or pull-off tape-hinges.
- ✓ Drive Cable must remain in Track.
- ✓ Slide a Track Connector over each hinged track section and tighten screws to provide permanent structural joint.



3. Loosen Spring Tensioning Nut on end of Motor Bracket. **CAUTION:** Do not remove.

4. Prepare to cut track to desired length.

- ✓ Uncoil Drive Cable and carefully lay on floor out of work area. Next, loosen but do not remove Lock-Screw in the Master Carrier where Drive Cable enters Master Carrier.
- ✓ Loosen Clamp-Screw that secures Motor Bracket to Track and remove Clamp.
- ✓ Pull Motor Bracket off track 6", or more. Drive Cable should follow.
- ✓ Lift Drive Cable out of Track section before cutting track.
- ✓ Subtract your Step 1 measurement from 240" (Maximum Track Length). Recheck all measurements.
- ✓ Place scrap piece of wood under Track end, then cut-off subtracted inches.
- ✓ Remove burrs from cut edge. Carefully clean-out filings inside track.
- ✓ Replace Drive Cable in Track. Leave Motor Bracket separated from Track at this time.

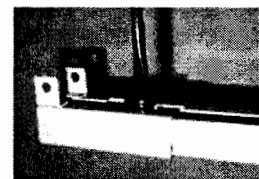
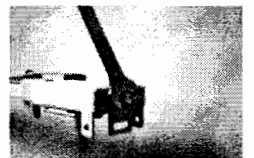


5. How to calculate number of Wheel-Carriers needed for Finished Track length.

One (1) carrier is required for every 4-inches of track length. The number of carriers is divided equally at each end of the track. The Model 2000 has 60 carriers. To determine number needed for Finished track length, divide finished length by 4. For example, a finished length of 192-inches requires 48 carriers (192 divided by 4), with 24 carriers needed at each end.

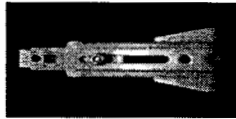
If track length was reduced, reduce the number of Wheel-Carriers in track as follows.

- ✓ Loosen Clamp-Screw near End Bracket. Remove Clamp, but leave End Bracket attached to Track.
- ✓ Remove appropriate and equal number of carriers from both ends of Track.
- ✓ **IMPORTANT:** Slide every remaining Wheel-Carrier back and forth in Track. Carriers must move freely. If Carrier drags or is tight it might be tangled with Drive Cable. This must be corrected before proceeding with installation.



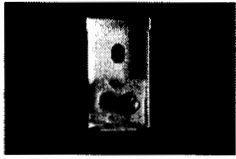
- ✓ Re-attach Clamp to End Bracket and Track. Tighten screw.
- ✓ At Master Carrier, pull Cable back through the Carrier. Motor Bracket will be pulled toward Track. When Motor Bracket touches Track, manually slide it onto Track. Re-attach Clamp and tighten screw.
- ✓ Place Drive Cable under Master Carrier Clamp. Pull Cable until taut and HOLD. Tighten Master Carrier Lock-Screw to secure Drive Cable.
- ✓ Tighten Spring Tensioning Nut 80%.

6. Mounting Hardware



Wall Mount Hardware:

Assemble L-Brackets to Track Hangers using furnished Screw and Nut. Adjust to full extension. Tighten screw.



Ceiling Mount Bracket:

Partially loosen set-screw of track latch. Ceiling Bracket is mounted directly to ceiling using two Molly bolts or toggle bolts in each bracket (not furnished), or regular screws into wood studs.

⚠ WARNING: After track attached to Ceiling Brackets, tighten **all set-screws** to prevent Track from falling.

7. Mark and mount Brackets

Note: When mounting Wall or Ceiling Brackets, allow for floor and ceiling clearance. Draperies should not drag against ceiling or floor. Typical clearance is 1" to 2".

Measure and mark center location of the window or other boundary. Also, mark on the Track its center. Align center mark of Track with center of window. Make pencil marks on wall or ceiling of both Track ends. Also, make pencil marks on wall or ceiling of the location of each Track Connector (no Wall Brackets in this area).

Note: Whenever possible, Brackets should be mounted into studs. If Bracket locations are not over a stud, drill hole and mount using furnished anchors and screws. **CAUTION:** Molly bolts, toggle bolts, or comparable device (not supplied) must be used for ceiling mounts that do not screw into a stud.

- ✓ At track end pencil marks from Step 7, measure 6" toward center of track and mark screw hole locations for Wall Brackets at each end of track. **Note:** For Ceiling mount, mark end Mounting Brackets 6" from Track ends and 2" or more from the wall.
- ✓ **VERIFY THAT MARKS ARE LEVEL.**
- ✓ Mark screw hole locations of remaining Mounting Bracket: maximum spacing is 20". Do not locate in line with track Connector.
- ✓ Mount Wall Brackets by driving screws into studs, or use anchors and screws.

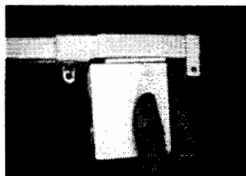
8. Attach Track to Hangers



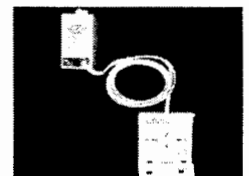
Note: Overlap Arm of Master Carrier must face into room.

- ✓ Starting at the two middle Hangers, tilt leading edge of Track toward wall. Insert groove in upper edge of Track into Hanger front slot. Rotate rear of Track up and snap it into Hanger rear compression fitting. Repeat with remaining Hangers.
- ✓ If necessary to remove Track from Hangers, reverse above process.

9. Attach Motor to Track and connect Control Cable between Motor and Wall Control Module



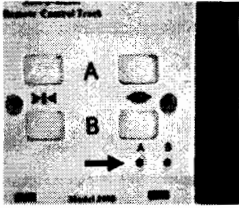
- ✓ Position Motor at 45° angle to Motor Bracket. Insert Motor drive end and twist until Motor snaps-in. To remove, depress latch behind Motor and twist Motor.
- ✓ Plug one end of Control Cable into Wall Control Module, and opposite end into Motor sock "A".
- ✓ Plug AC-DC Adapter into side of Motor. Plug Adapter into wall outlet.



- ✓ Install batteries in Transmitter using proper +/- orientation.

10. Test Motor using Transmitter and Wall Control Module. Press the "A" open or closed button of Transmitter or Wall Control. Motor should run and automatically stop when travel limit is reached. Motor also stops if any button is pressed.

Note. If motor does not automatically stop when travel limit is reached, press STOP button. Next, tighten Tensioning Nut on end of Motor Bracket. Retry. If motor still fails to stop, loosen Tensioning Nut most of the way, then partially loosen Top Screws in Carriers. Pull Cable taut; maintain tautness while tightening Top Screws in Carriers. Tighten Tensioning Nut 80%. Retry.



If motor continues to fail to stop at travel limit, use the furnished Adjustment Screwdriver to turn the tiny "A" screw of Wall Control counter-clockwise ¼ to ½ turn. Retry.

Heavy Drapery: When OPENING the drapery, in some cases it might be necessary to adjust the motor to more tightly gather the drapery into a small pocket. In this event, use the furnished Adjustment Screwdriver to turn the tiny "A" screw of Wall Control clockwise ¼ to ½ turn. This will cause the motor to run slightly longer before an automatic stop and thereby gather the drapery more.

11. Crimp Drive Cable ends and cut-off excess.

Slide the loose Crimp Sleeve on Drive Cable until it is against Carrier. Using pliers, firmly crush the Crimp Sleeve on Cable. Excess Cable can remain, or be cut-off. If cut, leave a 5" tail, tie ends together and tape.

12. Hang Drapery on Track.

Height of drapery can be adjusted by moving pleat hooks up or down.

Customer Service

Email: addamotor@cox.net Arizona: 480-836-8170 Toll-free: 888-233-6686 Mon - Fri, 8:30 AM to 4 PM pacific time.

Warranty

Add-a-Motor, Inc. provides a One-Year Limited Warranty for Model 1100 Systems. This product is warranted free of defects in materials and workmanship for a period of one year from date of purchase. Should a problem occur during the one-year period, please contact Add-a-Motor Customer Service and request a Return Authorization (RA) number. Carefully pack and seal defective item. Inside include copy of purchase receipt. Return by mail of freight prepaid to Add-a-Motor, Inc. 15821 E Jericho, Fountain Hills, AZ 85268. Write RA number on outside of carton. If our inspection shows the trouble was caused by defective materials or workmanship, Add-a-Motor, Inc. will repair or replace the nonconforming part without charge. This warranty does not apply where: repairs have been made or motor case has been opened, repairs are required because of normal wear and tear, product has been abused, misused or improperly maintained, malfunctions due to user fabrication errors, or alterations. IN NO EVENT SHALL ADD-A-MOTOR, INC. BE LIABLE FOR ANY INDIRECT, INCIDENTAL, CONSEQUENTIAL OR OTHER DAMAGES FROM THE SALE OR USE OF THE PRODUCT. THIS DISCLAIMER APPLIES BOTH DURING AND AFTER THE TERM OF THIS WARRANTY. THE FOREGOING WARRANTY IS EXCLUSIVE AND IN LIEU OF ALL OTHER WARRANTIES, WHETHER WRITTEN, ORAL OR IMPLIED. ALL OTHER WARRANTIES, INCLUDING ANY WARRANTY OF MERCHANTABILITY OR FITNESS FOR A PARTICULAR PURPOSE ARE HEREBY DISCLAIMED. Correction of nonconformities as provided above shall be purchaser's exclusive remedy and shall constitute fulfillment of all liabilities of Add-a-Motor, Inc., whether in warranty, contract, negligence, tort or otherwise with respect to the equipment or part delivered hereunder. Returns: Product that was user modified in any manner cannot be returned, or is subject to a restocking charge.