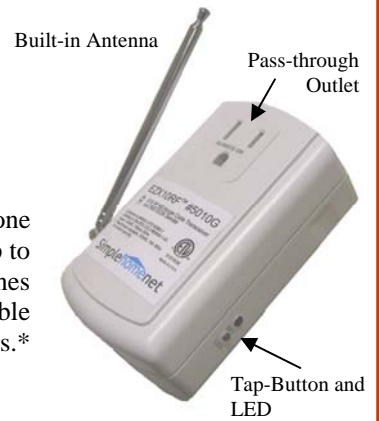


Quick-Start Guide

EZX10RF Wireless Sensor Receiver

INSTEON EZX10RF—Model #5010G

Your EZX10RF serves two powerful functions in one compact and easy to install package. On one hand, the EZX10RF is a whole-house transceiver for X10 wireless transmitters, with a range of up to 200 feet. On the other, it's an INSTEON scene controller that can trigger up to 20 INSTEON scenes via X10 RF transmitters or power-line X10 signals. In addition, the EZX10RF has a programmable safety feature which can ignore rogue X10 signals that may get into your network from neighbors.* Typical X10 devices include motion sensors, driveway alerts, panic buttons, alarms, etc.



*Advanced features are programmed via the EZSrvr or the FREE Simplehomenet Utility Suite available from the “Downloads” section.

Installation

- Select a suitable power outlet anywhere in your INSTEON power-line network. Avoid exposure to moisture. If installing outdoors, be sure to only use an outdoor approved, weather-proof enclosure. The antenna is built on the left side of the EZX10RF enclosure and can be oriented to point vertically regardless of the transceiver position. For best results, place the unit in an area free of metallic obstructions with the antenna fully extended and pointing upwards.
- Plug the EZX10RF into the selected outlet and observe its LED flash a number of times and then glow steadily after a few seconds. The EZX10RF is now ready to program! For convenience, a pass-through outlet is provided. Ensure that any device plugged into this outlet is not a radio frequency emitter that would interfere with the EZX10RF.

INSTEON Control Setup

Learning an X10 Code and Linking INSTEON devices:

Controlling INSTEON devices involves teaching the EZX10RF the X10 address that will be used, and enrolling (linking) the INSTEON device(s) that will be activated by that address. The following procedure is used to enroll one or several devices on a single X10 address.

1. Press and hold the pushbutton on the side of the EZX10RF for about 4 seconds, then release it. The LED on the EZX10RF should be flashing about once per second (slow rate). The EZX10RF is now listening for an X10 signal.
2. Send the X10 address from the device you want to use to trigger the INSTEON scene. If you're using a wireless X10 transmitter, press the ON button that you want to control the scene. If you're using a plug-in controller, send the X10 address followed by the ON command that you want to control the scene. The LED on the EZX10RF will flash more rapidly upon “hearing” the X10 address. The EZX10RF is now listening for INSTEON devices to enroll.
3. Press and hold the “SET” button on the INSTEON device to be controlled until its LED blinks (about 4 seconds) indicating the completed link. The LED on the EZX10RF may flash briefly but will continue to blink about twice per second indicating readiness to enroll additional INSTEON devices on this group. Refer to the INSTEON device's manual.
4. If additional INSTEON devices need to be enrolled, repeat step 3 above. Otherwise, press and hold the pushbutton on the EZX10RF for 4 seconds, then release it at which point the LED on the EZX10RF will turn off.
5. A timer (from .5 to 15.5 minutes) can now be added to delay the OFF command regardless of the duration of the incoming wireless signal. If no timer is needed, end the linking process by pressing and holding the pushbutton on the EZX10RF for 4 seconds. Its LED will glow steadily again. If a timer is desired, tap the pushbutton on the EZX10RF 1-31 times (each tap adds 1/2 minute to the timer), then press and hold its pushbutton for 4 seconds to end the linking session. (Note: If you notice that the LED continues to blink, press the pushbutton once to finish.)

Unlinking

To unlink an X10 address from controlling an INSTEON scene through the EZX10RF, follow the programming procedure above through step 3, substituting an X10 **OFF** command in step 2 instead of the **ON**. For example, if A1 ON was set up to trigger a scene, send A1 OFF to stop triggering that scene.

Resetting to Factory Configuration

If you need to completely erase all programming from the EZX10RF and restore to factory defaults, proceed as follows:

Unplug the EZX10RF for at least 10 seconds. Press and hold the pushbutton and plug it back in while keeping the pushbutton depressed. Continue to hold the pushbutton for an additional 10 seconds and then release.