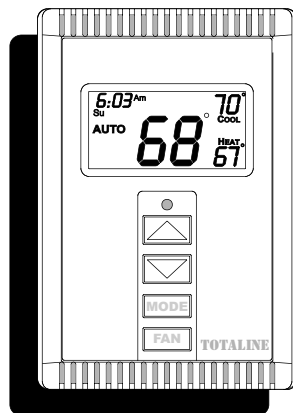


OWNER'S MANUAL

P474-1100RF

# Wireless Programmable Digital Thermostat

---



- Wireless Operation
- 7-Day Programmable
- 4 Time Periods Per Day
- Programmable Fan
- Easy To Read Display
- Thermoglow™ Backlight
- Auto Changeover
- Dual Setpoint
- 2 Heat, 2 Cool Stages

---

**TOTALINE**

**Wireless**

© 2000 by Replacement Components Division  
Carrier Corporation

*2 Stage  
Heat & Cool  
or  
Heat Pump*

## Table Of Contents

<b>FRONT PANEL</b>	2
<b>DISPLAY</b>	3
<b>QUICK START</b> <i>Set the clock and go</i>	5
<b>BASIC OPERATION</b>	6
<b>PROGRAMMING</b> <i>4 Time Periods</i>	8
<b>ADVANCED SETUP</b>	12
<b>ABOUT ADVANCED OPERATION</b>	16
<b>WARRANTY</b>	20



### CAUTION

Follow P474-1100REC *Installation Instructions* before proceeding.

**SET THERMOSTAT TO MODE "OFF" PRIOR TO CHANGING SETTINGS IN SETUP OR RESTORING FACTORY DEFAULTS.**

---

### **TOTALINE**

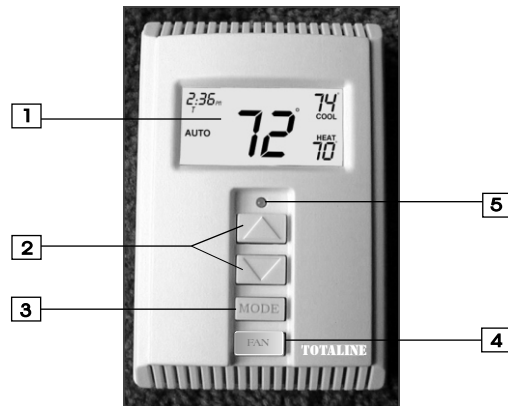
P474-1100RF

FCC ID MUH-T10013

This device complies with Part 15 of the FCC rules. Operation is subject to the following two conditions: (1) this device may not cause harmful interference, and (2) this device must accept any interference received, including interference that may cause undesired operation.

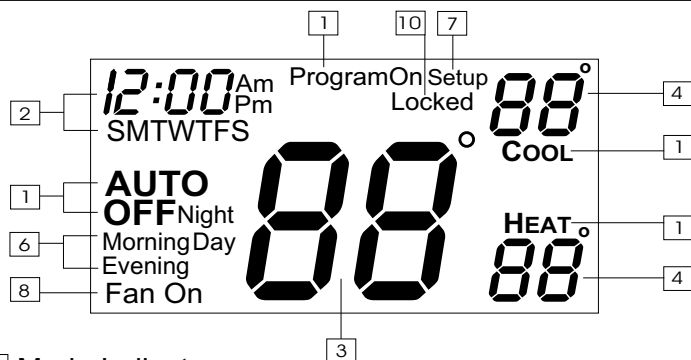
**Important: To assure proper operation use only AA LITHIUM batteries.**

## Front Panel



- 1** Liquid Crystal Display  
*with Thermoglow™*
- 2** Up/Down Buttons
- 3** Mode Button
- 4** Fan Button
- 5** Transmission Indicator

## Display

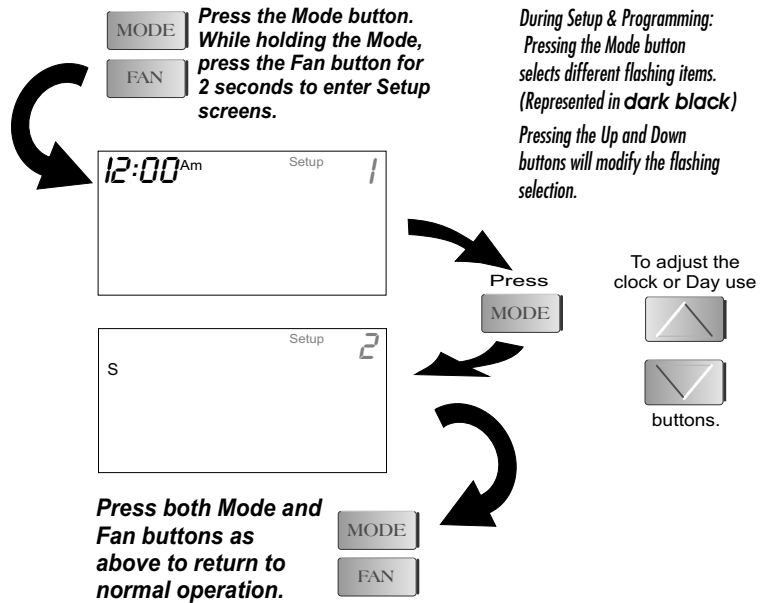


- 1** Mode Indicators  
Selects the operation mode of the equipment.  
**HEAT** - indicates the heat mode.  
**COOL** - indicates the air conditioning mode.  
**AUTO** - indicates the system will automatically changeover between heat and cool modes as the temperature varies.  
**OFF** - indicates the entire system is turned off.  
**PROGRAM ON** - indicates the stored program is enabled to run. *Page 6.*
- 2** Clock with Day of the Week  
Indicates the current time and day. This clock is also used to program the timer periods. *Page 5.*
- 3** Room Temperature Display  
Indicates the current room temperature.
- 4** Desired Set Temperature  
Indicates desired room temperature(s). *Page 7.*

## Display

- 6 **Morning, Day, Evening & Night** Indication  
Indicates the program time period. *Page 8-11.*
- 7 **Setup** Indication  
Indicates the thermostat is in the programming mode. *Page 12.*
- 8 **Fan Operation** Indication  
**Fan On** - indicates constant, continuous fan operation.  
When **Fan On** is not lit - indicates the fan will only operate when necessary to heat or to cool. *Page 7.*
- 10 **Locked** Indication  
**Locked** appears after the right combination of buttons are pressed, rendering the buttons inoperative. *Page 17.*

## Quick Start *Set the Clock and Go*



The Thermostat is preprogrammed from the factory to operate 1 or 2 Stage equipment\* without the need for further programming. To optimize the installation of this thermostat follow the instructions in the Advanced Setup section.

*\* The thermostat is not preprogrammed from the factory to operate electric heat or heat pump systems. To control these systems, follow the steps in the Wireless Receiver Instructions.*

## Basic Operation

### Select Mode

The **HEAT** setting indicates the temperature the room has to reach before the furnace will turn on to heat the room.



The **COOL** setting indicates the temperature the room has to reach before the air conditioner will turn on to cool the room.



**AUTO** will automatically select heat or cool based on room temperature demand.



**Program On** will activate the stored timer operation. (Morning, Day, Evening & Night Periods)

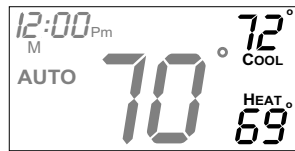


**OFF** indicates both heating and air conditioning systems are turned off.



## Basic Operation

### Select Desired Temperature



In any mode, adjust the desired Set Temperature with



buttons.

Pressing the up/down buttons in Auto mode will adjust **both** the heat and cool set temperatures simultaneously.

Pressing the up/down buttons in Heat or Cool modes will adjust only the heat or cool set temperature.

### Fan Operation Press FAN



**Fan On** indicates constant fan operation. This feature is active even if the thermostat is set to **Off**.

## Programming 4 Time Periods (Unit # 1 only)

Time period programming is only available on Unit Number 1.



MODE

Press the Mode button. While holding the Mode, press the Up button for 2 seconds to enter time period programming.

Use the back cover Programming Worksheet to help with this section.



Select the day of week



(M - S)

M



Press  
MODE



Adjust the start time for Morning.



7:30<sup>Am</sup> Start  
M  
Morning



Press  
MODE



Adjust the cooling setpoint for Morning.  
(35 - 99°)



7:30<sup>Am</sup> 74°  
M COOL  
Morning



Press  
MODE



Adjust the heating setpoint for Morning.  
(35 - 99°)



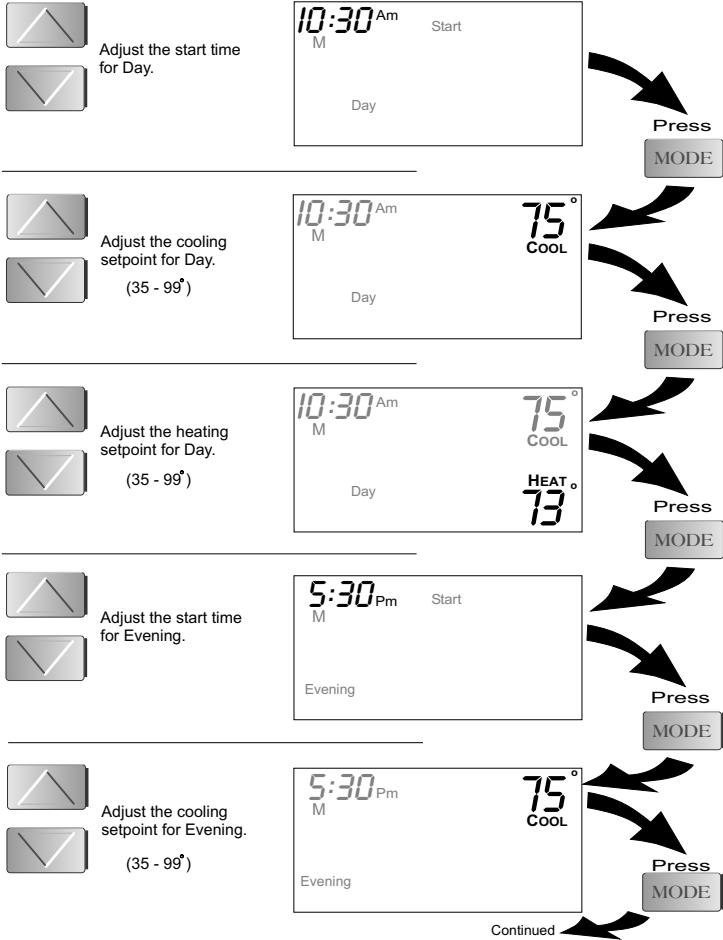
7:30<sup>Am</sup> 74°  
M COOL  
Morning HEAT 72°



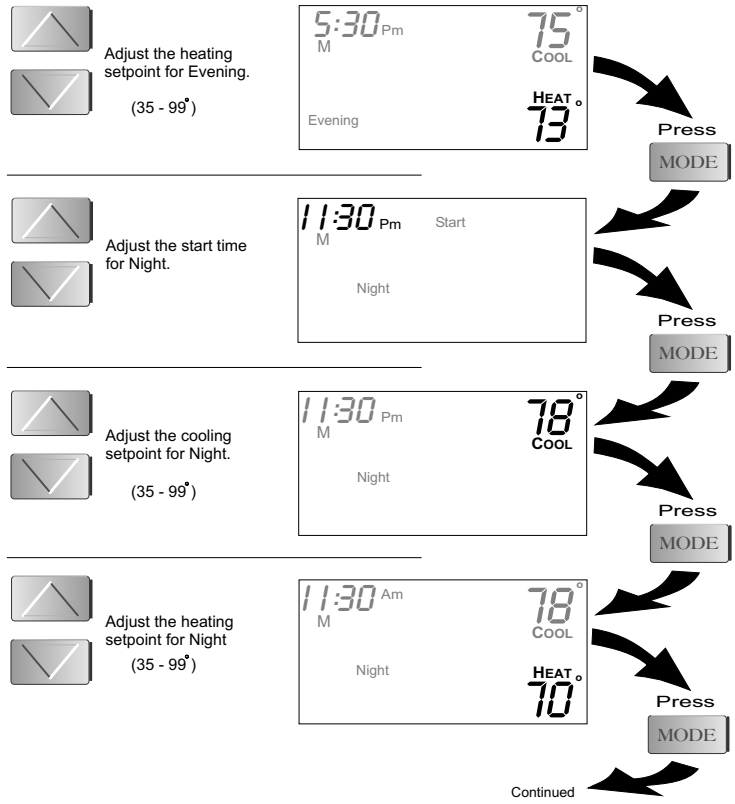
Press  
MODE

Continued

**Programming 4 Time Periods**

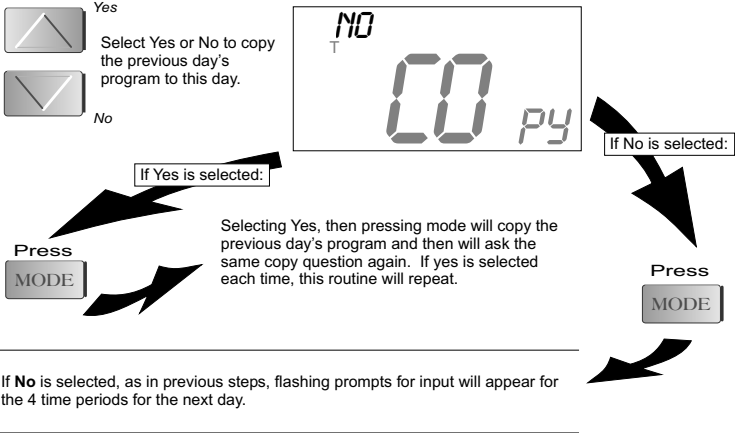


## Programming 4 Time Periods



**Programming 4 Time Periods**

The copy command becomes available after programming the entire previous day.



## Advanced Setup

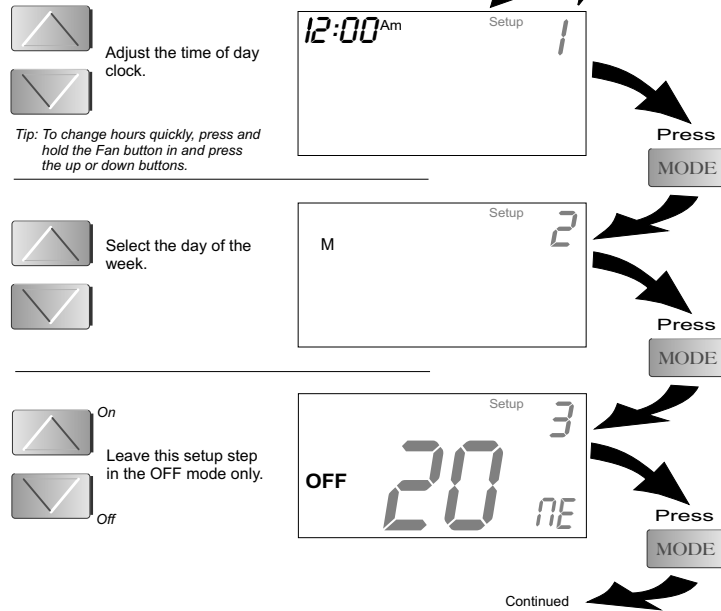
**MODE** Press the Mode button and release.

**MODE** THEN IMMEDIATELY press the Mode button again and while holding the Mode, press the Fan button.  
**FAN**

When this screen appears

**DO NOT RELEASE THE BUTTONS.**  
 Hold down Mode and Fan for an additional 7 seconds to enter Setup screens beyond step #2.

**NOTE:** Each step # is located at the top right corner of the display for easy reference.



## Advanced Setup



Select the House Code number. *The receiver must also use this same number for proper operation.*

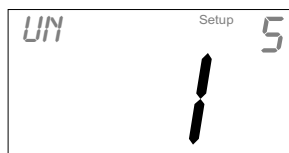


Press

MODE



Select the Unit ID number. If more than 1 thermostat is used, each will need a different Unit ID number.



Press

MODE



Adjust the deadband from 1 - 6 degrees.



**Note: Available only on Unit ID #1.**



Press

MODE



Adjust the minimum **difference** between cooling & heating setpoints.  
(0 - 6°)



Press

MODE



Select the cycles per hour limit.  
d=cycles per hour limit defeated.  
d1=d + defeat 5 min.  
Compressor lockout.  
(d, d1, 2 - 6)



**Note: Available only on Unit ID #1.**

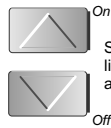


Press

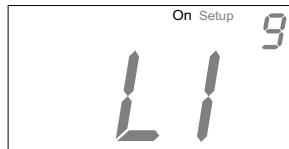
MODE

Continued

## Advanced Setup



Select the display back-light always **On**, or **Off** after 8 seconds.



Press  
MODE



Adjust the programmable fan timer. 0 - 60 minutes. 0:00 = off



Press  
MODE

**Note: Available only on Unit ID #1.**



Select thermostat operation in degrees Fahrenheit or Centigrade.



Press  
MODE

FAN

**Press the Mode button. While holding in the Mode, press the Fan button for 2 seconds to leave the Setup screens. If no buttons are pressed, the display will leave the setup screens after 30 seconds.**

## Advanced Setup

### Advanced Setup Table

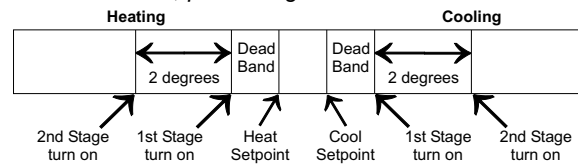
Step #	Description	Range	Factory Default
1	Time of day clock set	24 hour	12:00 Am
2	Day of the week	Sun - Sat	Monday
3*	Zoning Use	Off / On	Off
4	House Code	0 - 63	0
5	Unit Number	1 - 4/1 - 16	1
6**	Deadband or Temperature swing	1 - 6	2
7	Forced minimum difference heat/cool	0 - 6	2
8**	Cycles per hour	d, d1, 2 - 6	6
9	Thermoglow Backlight	Off / On	Off
10**	Programmable Fan	0:00 - 0:60	0:00
11	Fahrenheit or Centigrade	F / C	F

**\* For proper thermostat operation this setup step should remain in the OFF position.**

**\*\* Available on Unit Number 1, only.**

## About Advanced Features & Operation

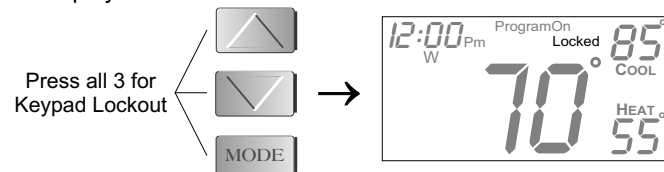
- \* MEMORY BACKUP - In the event of a power loss, the thermostat will retain the stored program settings without external power or batteries.
- \* 2 STAGE OPERATION - The 2nd Stage of heat or cool is turned on when (1) the 1st Stage has been on for a minimum of two minutes, **and** (2) the temperature spread from the setpoint is equal to or greater than: *the setpoint plus the deadband, plus 2 degrees*.



- \* MINIMUM HEAT/COOL SETPOINT DIFFERENCE - The Heat and Cool setpoints will not be allowed to come any closer to each other than the value set in Advanced Setup *step # 7, on page 13*. This minimum difference is enforced during Auto changeover and Program On operation.
- \* PROGRAMMABLE FAN - If the Programmable Fan timer is set to a value other than 0, the fan will run for the preprogrammed amount of time, *page 14, step# 10*. The Programmable Fan timer will start the fan at the top of each hour. The Programmable Fan may be active even if the thermostat mode is Off.

## About Advanced Features & Operation

- \* **KEYPAD LOCK** - To prevent unauthorized use of the thermostat, the front panel buttons may be disabled. To disable, or 'lock' the keypad, press and hold in the Mode button. While holding the Mode button in, press the Up and Down buttons in together. The **Locked** icon will appear on the display.



To **unlock** the buttons, again press and hold the Mode button. While holding the Mode button in, press the Up and Down buttons in together. The **Locked** icon will disappear from the display.

## About Advanced Features & Operation

- \* DUAL SETPOINT BEHAVIOR - The adjustable setpoint range is: 35 - 99 degrees in Fahrenheit and 7 - 35 degrees in Centigrade. When in the modes Heat or Cool, this adjustable range is unhampered. When adjusting any Auto mode, including programming time periods, the thermostat will not allow the Heat setpoint to get closer to the Cool setpoint than the value programmed as the minimum difference in *step 7, page 13*.  
When entering the Auto mode from Cool, the Heat and Cool setpoints will remain spread apart by the amount that they were adjusted, prior to entering Auto.  
For example: If the Cool setpoint was set to 80 while in the Cool mode and the Heat setpoint was adjusted to 70 while in the Heat mode, upon entering the Auto mode the Heat and Cool setpoints would be 80 and 70. **Both** setpoints would then move up and down together, (in this example spread by 10 degrees), by pressing the up or down buttons.  
To move the Heat and Cool setpoints closer together, enter the Cool or Heat mode by pressing the Mode button, then adjust the setpoint(s) closer together. Heat is limited to how close it can come to Cool by *step 7, page 13*.

## About Advanced Features & Operation

- \* **FACTORY DEFAULTS** - If, for any reason it is desirable to return all stored settings back to the factory default settings, press the Mode button. While holding the Mode button in, press the Down button for 2 sec. All icons will appear. Press and hold in the Fan button until **Fd** appears. This resets all factory settings. To return to normal operation press the Mode button twice.
- \* **CALIBRATION** - Press the Mode button. While holding the Mode button in, press the Down button for 2 seconds. All icons will appear. Press the Mode button once more. At this point use the Up and Down buttons to calibrate room temperature, if needed. Press the Mode button to return to normal operation. **NOTE CAUTION ON PAGE 1.**
- \* **LOW BATTERY WARNING** - When the AA Lithium batteries reach a preset low power state, the display will flash the Low Battery icon. After this icon appears change the batteries within a few weeks. Use only AA Lithium batteries for proper operation.
- \* **Battery Eliminator (optional accessory)** - Use only the Totaline accessory (P474-0800) for proper operation. 3vdc, 50ma output, negative center conductor.

## Warranty

One-Year Warranty - This Product is warranted to be free from defects in material and workmanship. If it appears within one year from the date of original installation, whether or not actual use begins on that date, that the product does not meet this warranty, a new or remanufactured part, at the manufacturer's sole option, to replace any defective part will be provided without charge for the part itself; PROVIDED the defective part is returned to the distributor through a qualified servicing dealer.

THIS WARRANTY DOES NOT INCLUDE LABOR OR OTHER COSTS incurred for diagnosing, repairing, removing, installing, shipping, servicing or handling of either defective parts or replacement parts. Such costs may be covered by a separate warranty provided by the installer.

THIS WARRANTY APPLIES ONLY TO PRODUCTS IN THEIR ORIGINAL INSTALLATION LOCATION AND BECOMES VOID UPON REINSTALLATION.

LIMITATIONS OF WARRANTIES – ALL IMPLIED WARRANTIES (INCLUDING IMPLIED WARRANTIES OF FITNESS FOR A PARTICULAR PURPOSE AND MERCHANTABILITY) ARE HEREBY LIMITED IN DURATION TO THE PERIOD FOR WHICH THE LIMITED WARRANTY IS GIVEN. SOME STATES DO NOT ALLOW LIMITATIONS ON HOW LONG AN IMPLIED WARRANTY LASTS, SO THE ABOVE MAY NOT APPLY TO YOU. THE EXPRESSED WARRANTIES MADE IN THIS WARRANTY ARE EXCLUSIVE AND MANY NOT BE ALTERED, ENLARGED, OR CHANGED BY ANY DISTRIBUTOR, DEALER, OR OTHER PERSON WHATSOEVER.

ALL WORK UNDER THE TERMS OF THIS WARRANTY SHALL BE PERFORMED DURING NORMAL WORKING HOURS. ALL REPLACEMENT PARTS, WHETHER NEW OR REMANUFACTURED, ASSUME AS THEIR WARRANTY PERIOD ONLY THE REMAINING TIME PERIOD OF THIS WARRANTY.

THE MANUFACTURER WILL NOT BE RESPONSIBLE FOR:

1. Normal maintenance as outlined in the installation and servicing instructions or owners manual including filter cleaning and/or replacement and lubrication.
2. Damage or repairs required as a consequence of faulty installation, misapplication, abuse, improper servicing, unauthorized alteration or improper operation.
3. Failure to start due to voltage conditions, blown fuses, open circuit breakers or other damages due to the inadequacy or interruption of electrical service.
4. Damage as a result of floods, winds, fires, lightning, accidents, corrosive environments or other conditions beyond the control of the Manufacturer.
5. Parts not supplied or designated by the Manufacturer, or damages resulting from their use.
6. Manufacturer products installed outside the continental U.S.A., Alaska, Hawaii, and Canada.
7. Electricity or fuel costs or increases in electricity or fuel costs from any reason whatsoever including additional or unusual use of supplemental electric heat.
8. ANY SPECIAL INDIRECT OR CONSEQUENTIAL PROPERTY OR COMMERCIAL DAMAGE OF ANY NATURE WHATSOEVER. Some states do not allow the exclusion of incidental or consequential damages, so the above may not apply to you.

This warranty gives you specific legal rights, and you may also have other rights which may vary from state to state.

# Programming Worksheet

see page 8

DAY	PERIOD	START TIME	COOL	HEAT
M O N D A Y	Morning			
	Day			
	Evening			
	Night			
T U E S D A Y	Morning			<i>Copy Mon → Tue</i>
	Day			<input type="checkbox"/> No
	Evening			<input type="checkbox"/> Yes
	Night			
W E D N E S D A Y	Morning			<i>Copy Tue → Wed</i>
	Day			<input type="checkbox"/> No
	Evening			<input type="checkbox"/> Yes
	Night			
T H U R S D A Y	Morning			<i>Copy Wed → Thu</i>
	Day			<input type="checkbox"/> No
	Evening			<input type="checkbox"/> Yes
	Night			
F R I D A Y	Morning			<i>Copy Thu → Fri</i>
	Day			<input type="checkbox"/> No
	Evening			<input type="checkbox"/> Yes
	Night			
S A T U R D A Y	Morning			<i>Copy Fri → Sat</i>
	Day			<input type="checkbox"/> No
	Evening			<input type="checkbox"/> Yes
	Night			
S U N D A Y	Morning			<i>Copy Sat → Sun</i>
	Day			<input type="checkbox"/> No
	Evening			<input type="checkbox"/> Yes
	Night			



Printed on recycled paper.  
P/N 88-209 Rev. 1

Form: OG-P474-08  
Catalog: 53P4-747