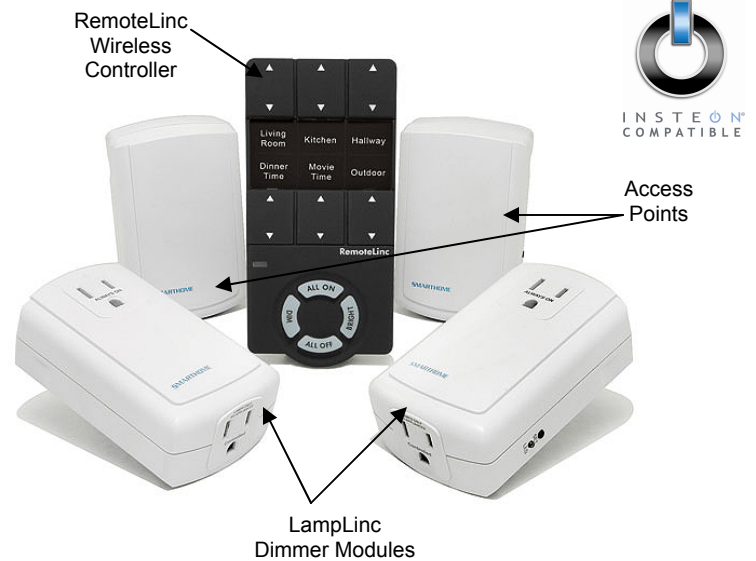


Quick-Start Guide

RemoteLinc™ Starter Kit – INSTEON® Lamp Control Starter Kit

Models: 2490R, 2490RBK - 5-piece starter kit includes everything needed to start an INSTEON automation system with wireless remote control access and control



Your Starter Kit Contains:

- Two (2) Access Points (Access Point #2443)
- Two (2) LampLinc™ Dimmer Modules, 3-Pin (LampLinc #2456D3)
- One (1) RemoteLinc Wireless Controller (RemoteLinc #2440 or 2440BK)

INSTEON is a simple, reliable, and affordable breakthrough in home control. Simple - INSTEON uses Plug-n-Tap™ installation and programming that takes only minutes to setup. Reliable - every INSTEON device is a 2-way repeater, using existing power line wiring as well as radio frequency for communication. Affordable - INSTEON home automation products are priced at just a fraction of comparable systems. A home with INSTEON automation grows in value with every device you add, and truly makes life more convenient, safe and fun.

Installation

- 1) Install each Access Point, referencing the Quick-Start Guide provided with that product
- 2) Install each LampLinc Dimmer Module, referencing the Quick-Start Guide provided with that product
- 3) Install the RemoteLinc Wireless Controller, referencing the Quick-Start Guide provided with that product
- 4) Then, use the RemoteLinc Wireless Controller Quick-Start Guide to Link your LampLinc Dimmer Module to the RemoteLinc Wireless Controller

Troubleshooting and Tech Support

Call: Tech. Support @ 1-800-SMARTHOME (800-762-7846)

Contact Us Online: <http://www.smarthome.com/contactus.html>