

UPM

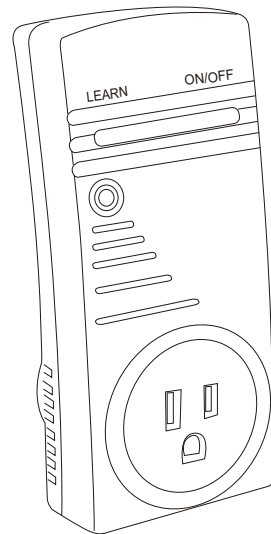
RC270+TR430 Indoor Remote Control Set

OWNERS MANUAL

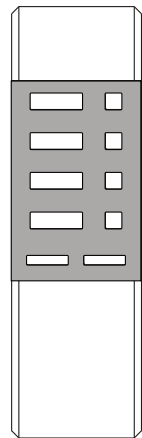
Congratulations on your purchase of a UPM remote control set. Please take the time to read and understand this manual so you can begin to enjoy the convenience this product can offer.

FEATURES

- 433 MHz RF technology
- Control up to 4 remote receivers
- ON/OFF function
- 15A / 1800W resistive
- Transmission range of up to 130 feet in open area



Receiver



Transmitter

GETTING STARTED

Batteries are not required in the RC270 receiver. Two button cell batteries are included for the TR430 transmitter

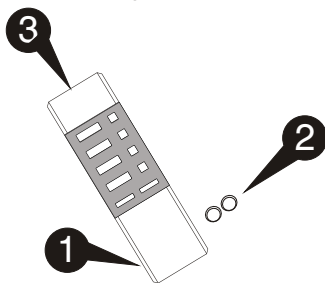
- 1 remove the battery cover from the back of the transmitter
- 2 place two button cell batteries between terminals observing proper polarity then replace cover
- 3 the green LED will light up with any key press once the battery is installed correctly



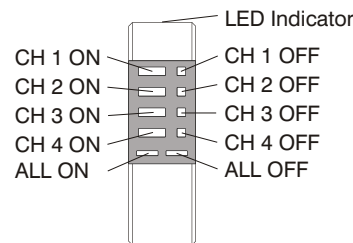
ON/OFF

LEARN - used when programming receiver channel

battery installation

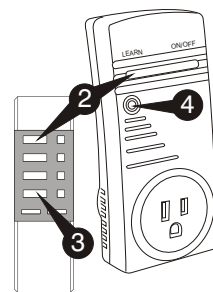


button descriptions



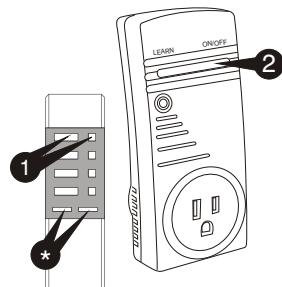
LEARN FUNCTION

- 1 Plug receiver into wall socket
- 2 Press LEARN on receiver while simultaneously pressing the desired channel button on the transmitter
- 3 Repeat 1 and 2 for any additional receivers (available at your local retailer)
- 4 If LEARN is completed successfully, the LED on the receiver should light up when ON is pressed



ON/OFF FUNCTION

- 1 Power On/Off by using the ON/OFF keys on the transmitter
- 2 The ON/OFF button on the receiver also turns power on and off
- * If you have more than one receiver set up, you can use the ALL ON or ALL OFF button to simultaneously turn ALL the receivers ON or OFF.



TROUBLESHOOTING

problem

Transmitter stops turning receiver on and off.

solution

Use the LEARN function to reprogram the receiver or
Check the battery

FCC COMPLIANCE

This device complies with Part 15 of the FCC Rules of Operation and is subjected to the following two conditions:

1. this device may not cause harmful interference, and
2. this device must accept any interference received, including interference that may cause undesired operation.

TECHNICAL SPECIFICATIONS

Ratings: 120 V AC
Maximum Load: 1800W resistive; 600W tungsten
Transmission Range: up to 130 feet in open area
Transmission Frequency: 433.92 MHz