



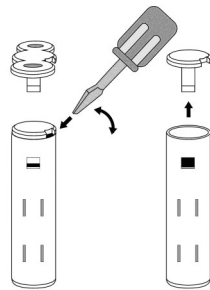
**Document Number: 56I00-1  
Installation Instructions**

**56A00-1**

The 56A00-1 Recessed Door/Window Transmitter is a supervised wireless contact that can be concealed with a door or window frame for virtual transparency. It works with the HAI 45A00-1 Wireless Receiver and is supplied with a replaceable lithium battery that lasts for 5 years under normal operation.

**Opening the 56A00-1**

Use a flathead screw driver to open the 56A00-1 to change tops or access the battery (See figure 1).



**Figure 1**

**NOTICE:** Before removing the circuit board, notice that it fits inside a channel on the inside of the case. When replacing the board, ensure you fit it back into the same channel for proper fit.

Circuit Board

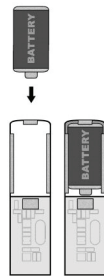
**Install Battery**

Use care when installing the battery and observe the correct polarity when the battery is inserted (See Figure 2). Use only Panasonic Lithium CR2 batteries for replacement. When replacing battery use a flathead screw driver to open the top (See Opening the 56A00-1).

**WARNING! Battery may explode if mistreated. Do not recharge, disassemble or dispose of in fire.**

**Mount Transmitter and Magnet**

It is important to select the proper placement of the recessed transmitter and magnet. The transmitter has two separate tops that allow a flush mount or screw mount in case you accidentally over drill the hole or require extra support to ensure the transmitter does not move. The magnet does not have a second top with a flange to screw it into place so you must be extra careful to ensure that the magnet is tightly in place once installed.



**Figure 2**

**Step 1:** Install the CR2 battery if you have not already done so (See Install Battery).

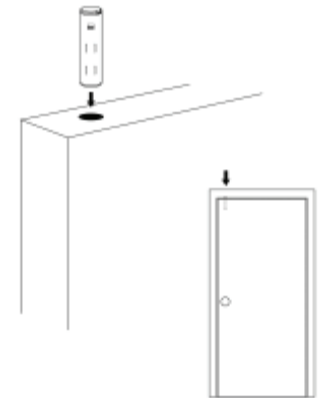
**Step 2:** Write down the serial number printed on the outside of the 56A00-1 case or on the board inside where you place the battery.

**Step 3:** Select a location on the door or window frame for the 56A00-1 transmitter and magnet to be installed. Use a marker or piece of clay to mark and ensure that the two holes that you intend to drill are lined up directly across from each other.

**Step 4:** Using an 11/16" drill bit, slowly drill the first hole for the magnet. The 56A00-1 was specifically designed to be slightly larger than an 11/16" hole so you will need to carefully drill to fit by slowly routing the hole little by little to ensure a snug fit.\*

**Step 5:** Drill the mating hole for the transmitter and use either the standard flush mount cap and insert the transmitter for a snug fit or use the flanged cap and use the included screws for mounting the transmitter to the door or window frame.

\* If you accidentally drill the magnet side too big and it is loose, you can place the transmitter in that position and use the flanged cap to screw it into position.



**This is only one option when mounting the 56A00-1. You must assess the best mounting method based on the application.**

**Enrolling the 56A00-1**

To enroll the 56A00-1, put the 45A00-1 Wireless Receiver in to Setup mode and advance to an unused address location. Activate the reed switch by removing the magnet from the transmitter for 1 second, then replacing it. Refer to the Installation Instructions for the 45A00-1 for additional information.

**Federal Communications Commission (FCC) Statement:**

This device complies with Part 15 of the FCC Rules. Operation is subject to the following two conditions: (1) This device may not cause harmful interference, and (2) this device must accept any interference received, including interference that may cause undesired operation.

IC: The term 'IC:' before the radio certification number only signifies that Industry Canada technical specifications were met.